

**CAVA** ROCHAS

GET TO KNOW

# Aré Marble

MARBLE PORTFOLIO

We want to make history  
and it will be made with marble.

*Join us!*



+ HARD +  
MARBLE  
— from —  
RIO DE  
JANEIRO



# About us

CAVA Rochas is a Brazilian company that extracts and sells ornamental stones, and has been in the market since 2003. With responsibility, enthusiasm and know-how, we invest in high technology, as well as in the organization of a logistic structure of exceptional strategy. In addition, we care about the environment, which is why our marble is extracted efficiently, sustainably and with a minimum amount of waste.

Today, our operations are centered on our Aré Marble quarry, located in the State of Rio de Janeiro, where we extract a portfolio of marbles of exotic, unique and sophisticated beauty.

Unlike most Brazilian marbles, Aré Marble also stands out for its special physical characteristics: compact, hard, with low porosity, low water absorption and high durability, ideal for all types of applications - floors, panels, countertops, sinks and furniture, among others.

**Our marble is ready to reach the world.**



**Black Ink**



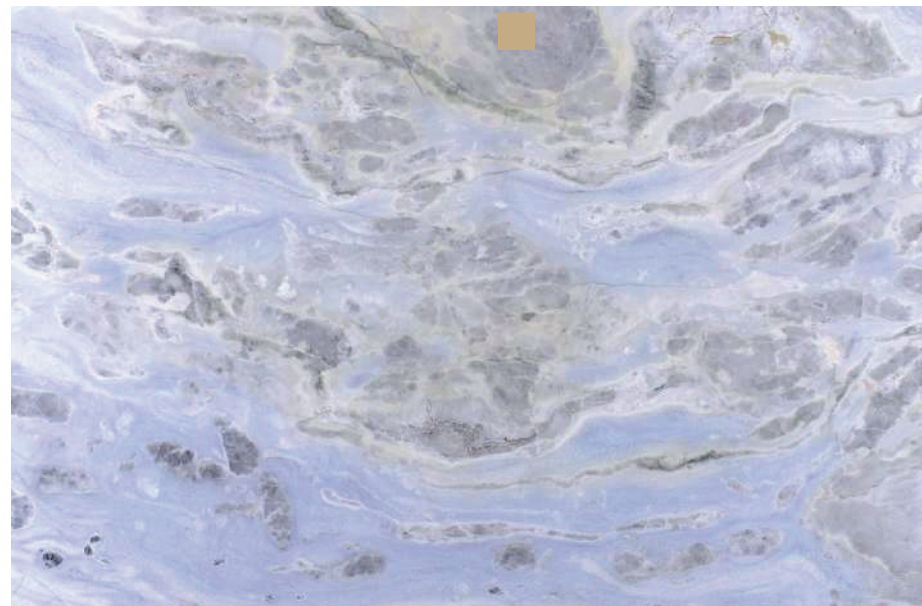
**Champagne Wave**



**Sand River**



**Hurricane**



**Blue River**



**Blizzard**



**Black Ink Aré Marble**

**CAVA** ROCHAS



ARÉ MARBLE

# Black Ink

Black Ink Aré Marble is one of our most exotic stones. Its dark veins give the marble an authentic and modern beauty through the contrast between black and white. In addition to its unique beauty, its composition of minerals gives it a hard material, high resistance, low porosity, and low water absorption.

- **COLORS**

White, black, and soft yellow.

- **COMPOSITION**

Dolomite, quartz and calcite.

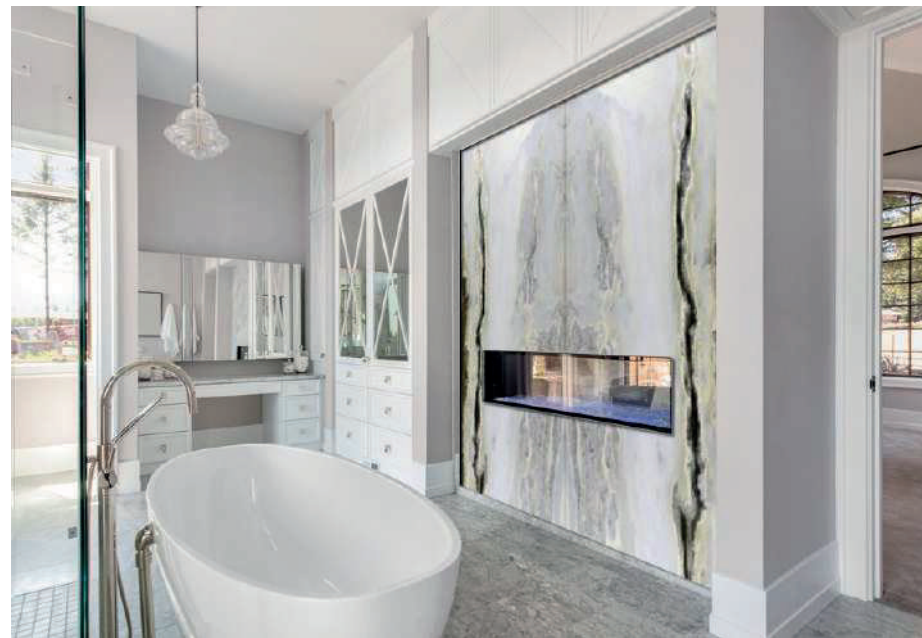
- **ORIGIN**

Aré Quarry, Rio de Janeiro.

**Black Ink** refers to the body paintings that identify the ethnicity and uniqueness of the Tupi-Guarani Indians of the Aré region, in Brazil.

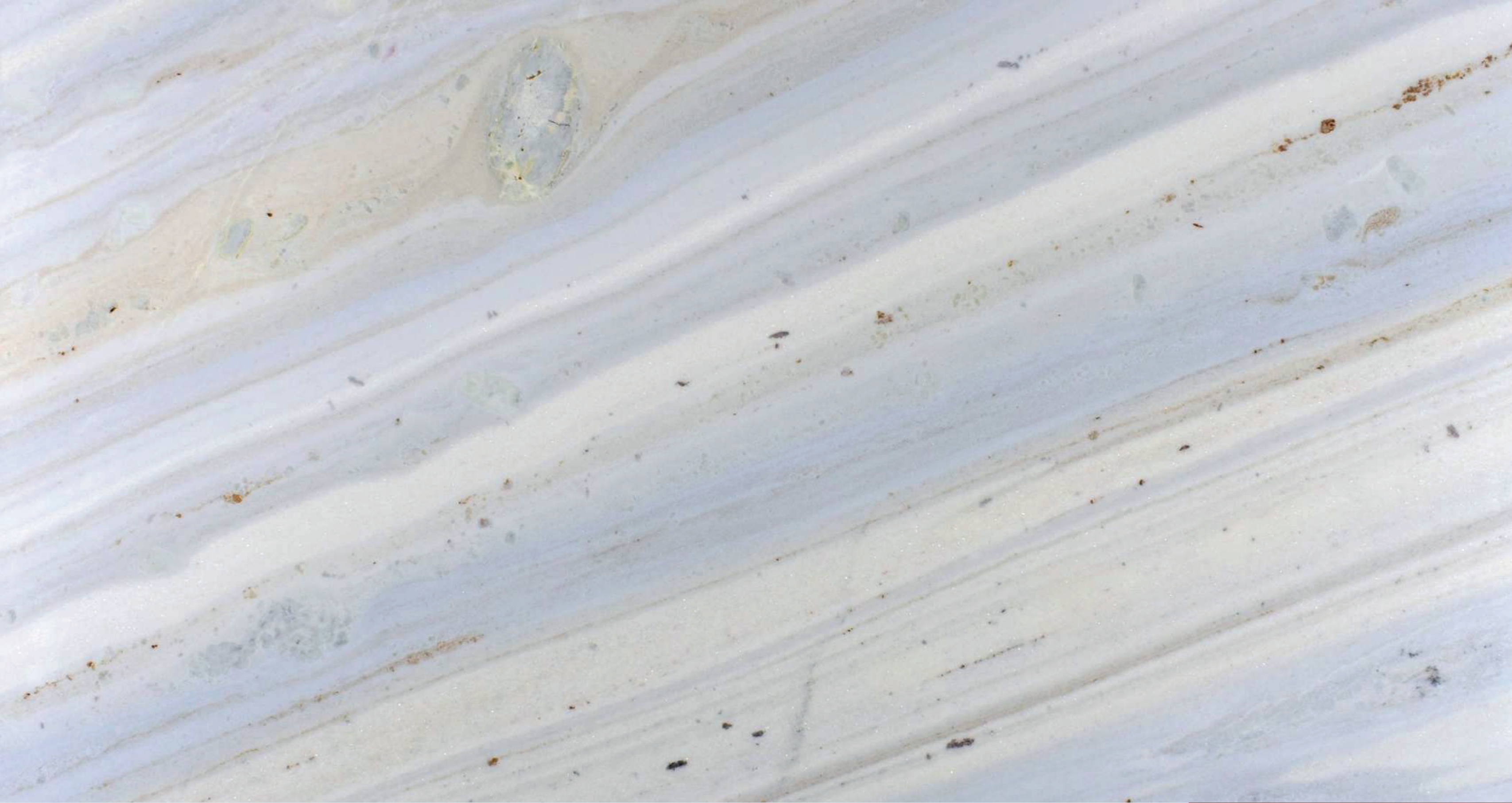


**Black Ink Aré Marble**



**Black Ink Aré Marble**

**CAVA** ROCHAS



**Champagne Wave Aré Marble**

**CAVA**  
ROCHAS





ARÉ MARBLE

# Champagne Wave

Champagne Wave Aré Marble brings a unique sophistication through nuances of blue, yellow, and gold, which light up in a perfect soft way. With tenuous and parallel veins, its visual confers minimalism and adaptability to diverse environments, and its composition of minerals guarantees a hard material, with high resistance, low porosity, and low water absorption.

**Champagne Wave** symbolizes the look of this marble, which brings the strength and sovereignty of a wave and, at the same time, the softness and luminance of a champagne.

- **COLORS**

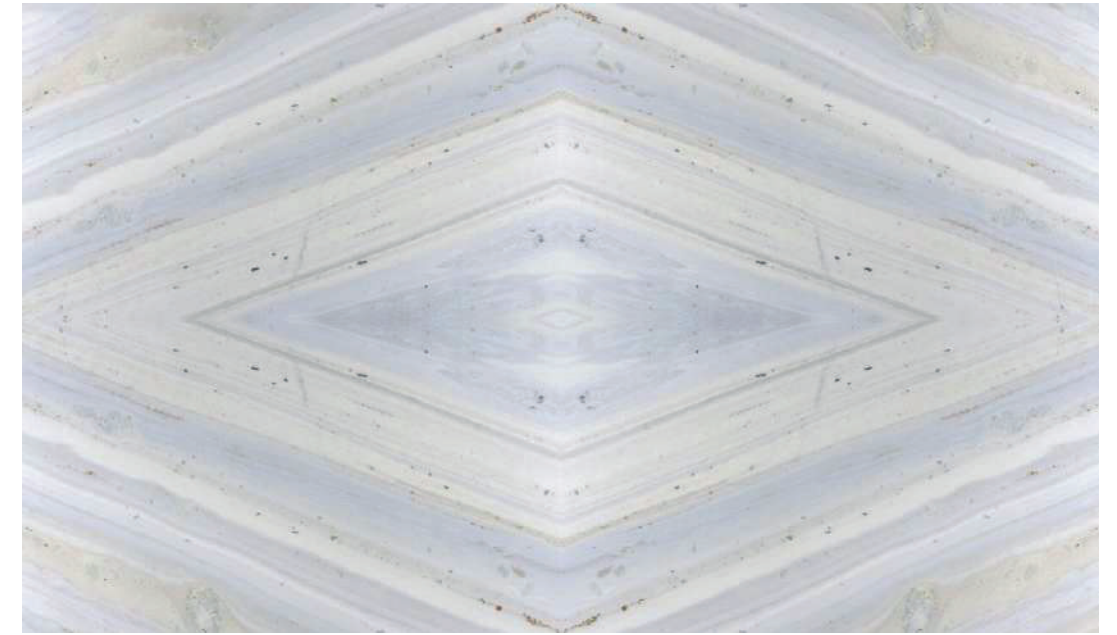
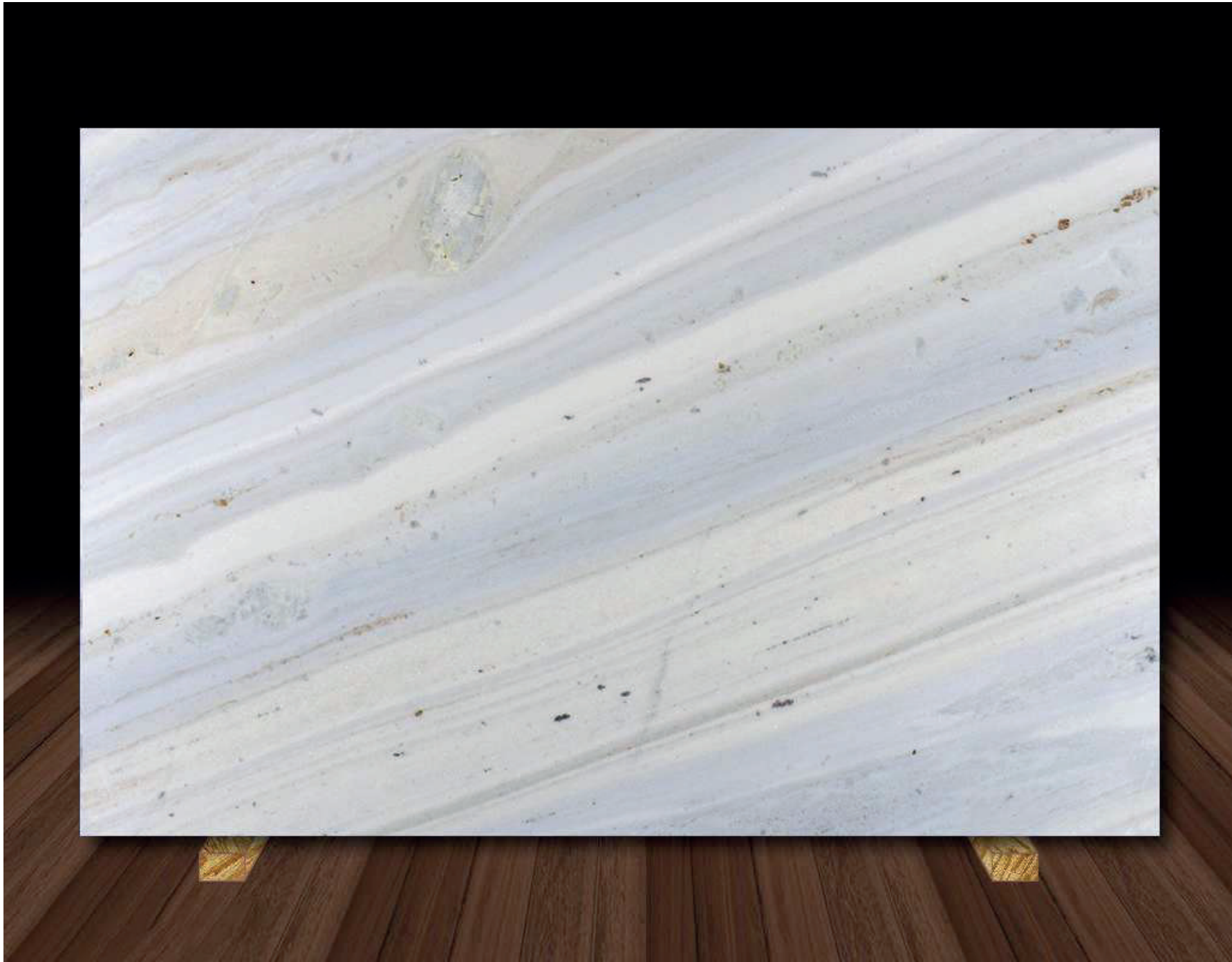
Light blue, soft yellow and gold.

- **COMPOSITION**

Dolomite, quartz and calcite.

- **ORIGIN**

Aré Quarry, Rio de Janeiro.



**Champagne Wave Aré Marble**

**CAVA** ROCHAS



**Champagne Wave Aré Marble**

**CAVA** ROCHAS



**Sand River Aré Marble**

**CAVA** ROCHAS



ARÉ MARBLE

# Sand River

Sand River Aré Marble is a marble rich in texture. Its veins and movements of different tones intertwine expressively, creating a modern and luxurious look. Its composition of minerals gives it a hard and highly resistant material.

**Sand River** resembles the rivers of the *Aré* region in Brazil, which merge different tones and textures on their golden sandy banks.

- **COLORS**

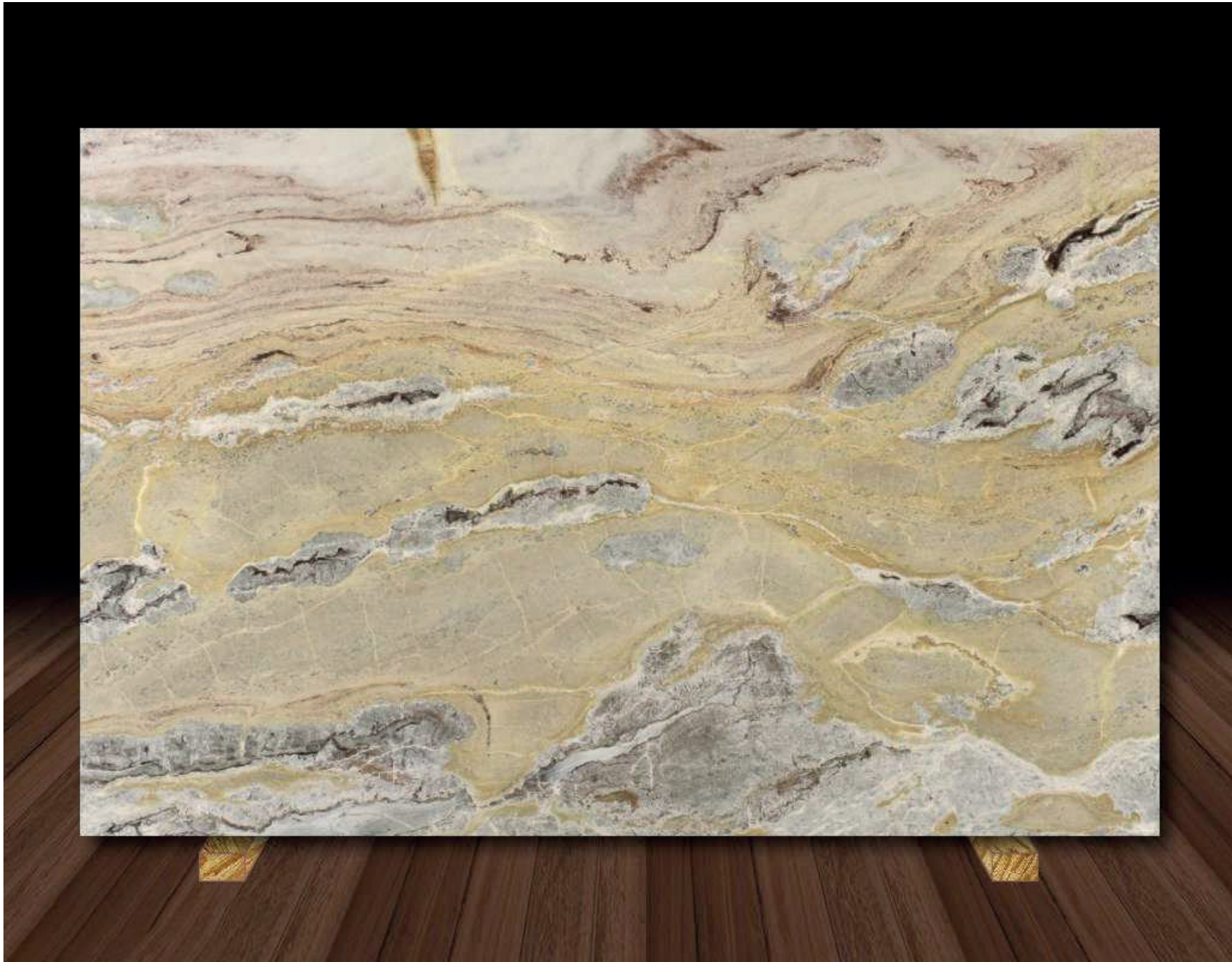
Yellow and gold with shades of black.

- **COMPOSITION**

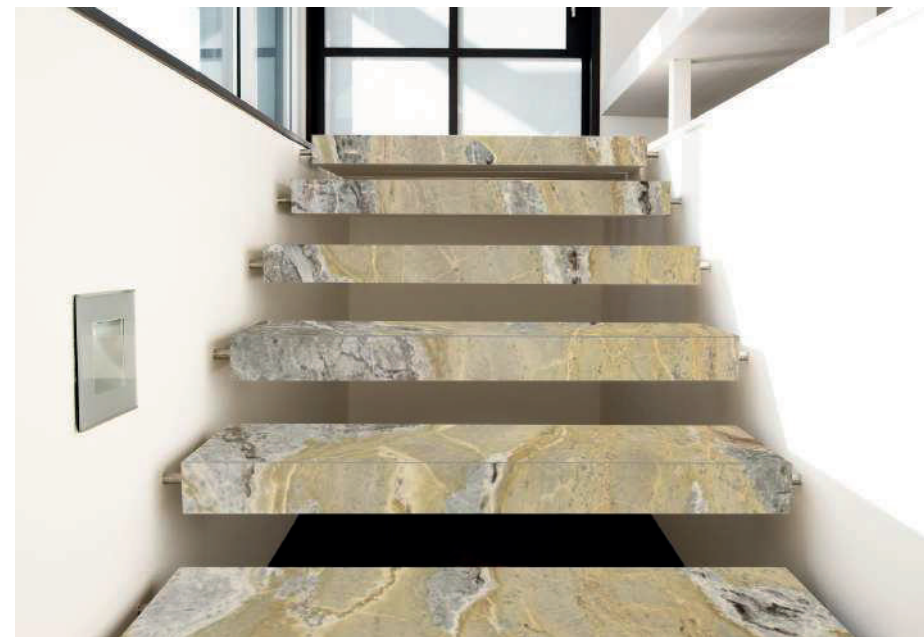
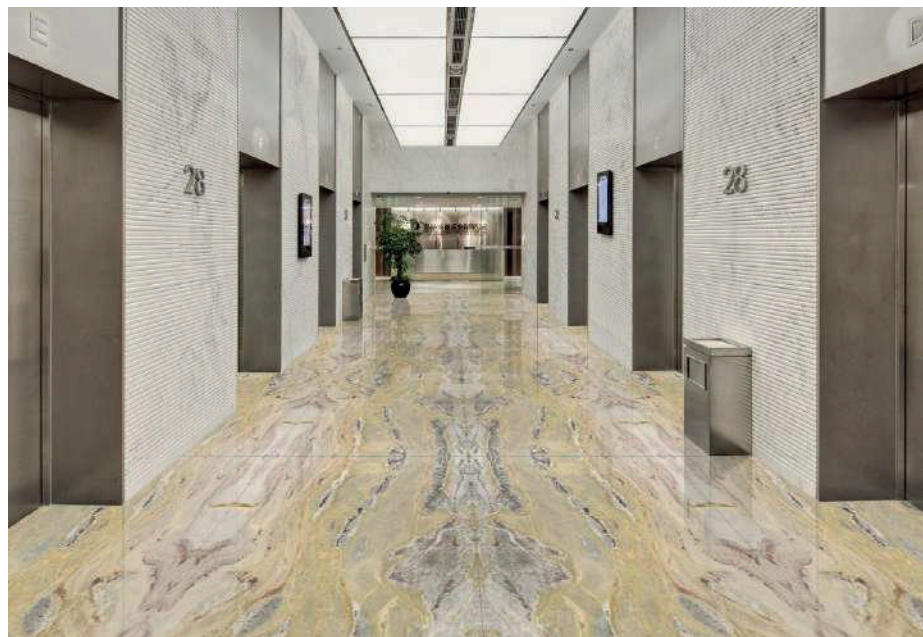
Dolomite, quartz and calcite.

- **ORIGIN**

Aré Quarry, Rio de Janeiro.



**Sand River Aré Marble**



**Sand River Aré Marble**

**CAVA** ROCHAS



**Hurricane Aré Marble**





ARÉ MARBLE

# Hurricane

Hurricane Aré Marble is a peculiar white marble, with an outstanding personality. Its coloration is predominantly white, with some gray veins, which give the stone a special charm. Its minimalist presentation promotes an elegant look, proving that luxury and subtlety go together. Besides its unique beauty, its composition of minerals composes a hard material, with high resistance, low porosity, and low water absorption.

**Hurricane** is the ideal name to represent this marble, which besides beautiful and rare, has the grandeur of a natural phenomenon.

- **COLORS**

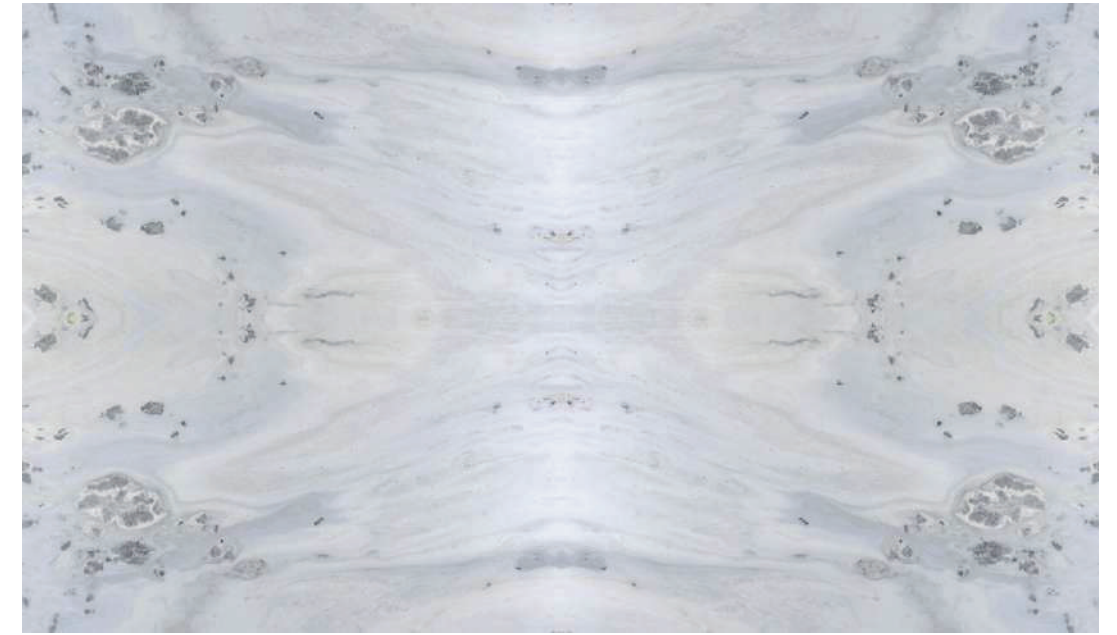
White and gray.

- **COMPOSITION**

Dolomite, quartz and calcite.

- **ORIGIN**

Aré Quarry, Rio de Janeiro.

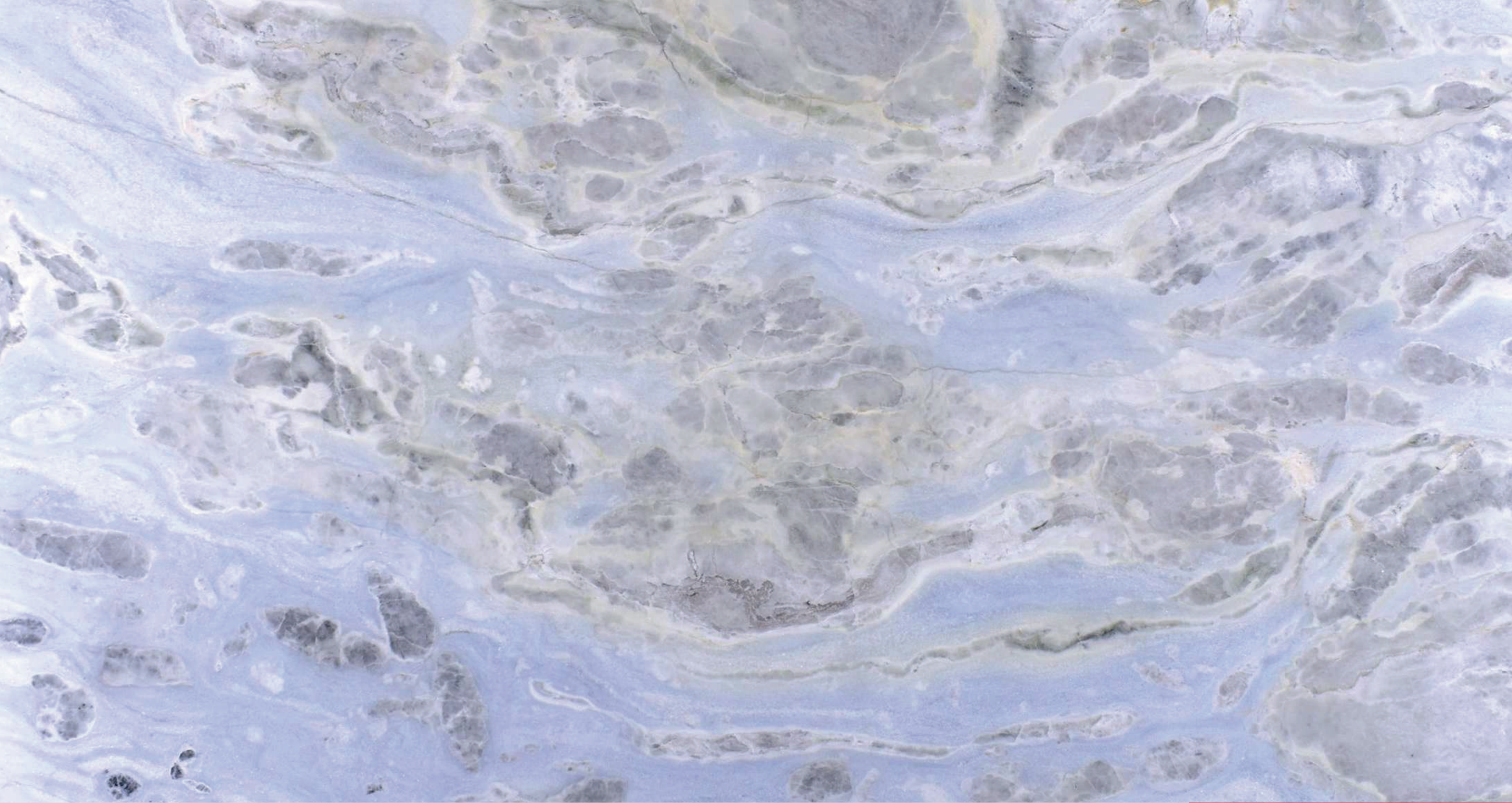


**Hurricane Aré Marble**



**Hurricane Aré Marble**

**CAVA** ROCHAS



**Blue River Aré Marble**

**CAVA** ROCHAS



ARÉ MARBLE

# Blue River

Aré Marble Blue River brings the blue and gray tones into focus, composing a beautiful and sophisticated look. Its smooth formations are responsible for a minimalist and charming design. Besides the visual appeal, its quartz composition guarantees a translucent, hard, highly resistant material, with low porosity and low water absorption.

**Blue River** gets its name because it resembles a stream in contact with the most beautiful rocks in Brazilian nature.

- **COLORS**

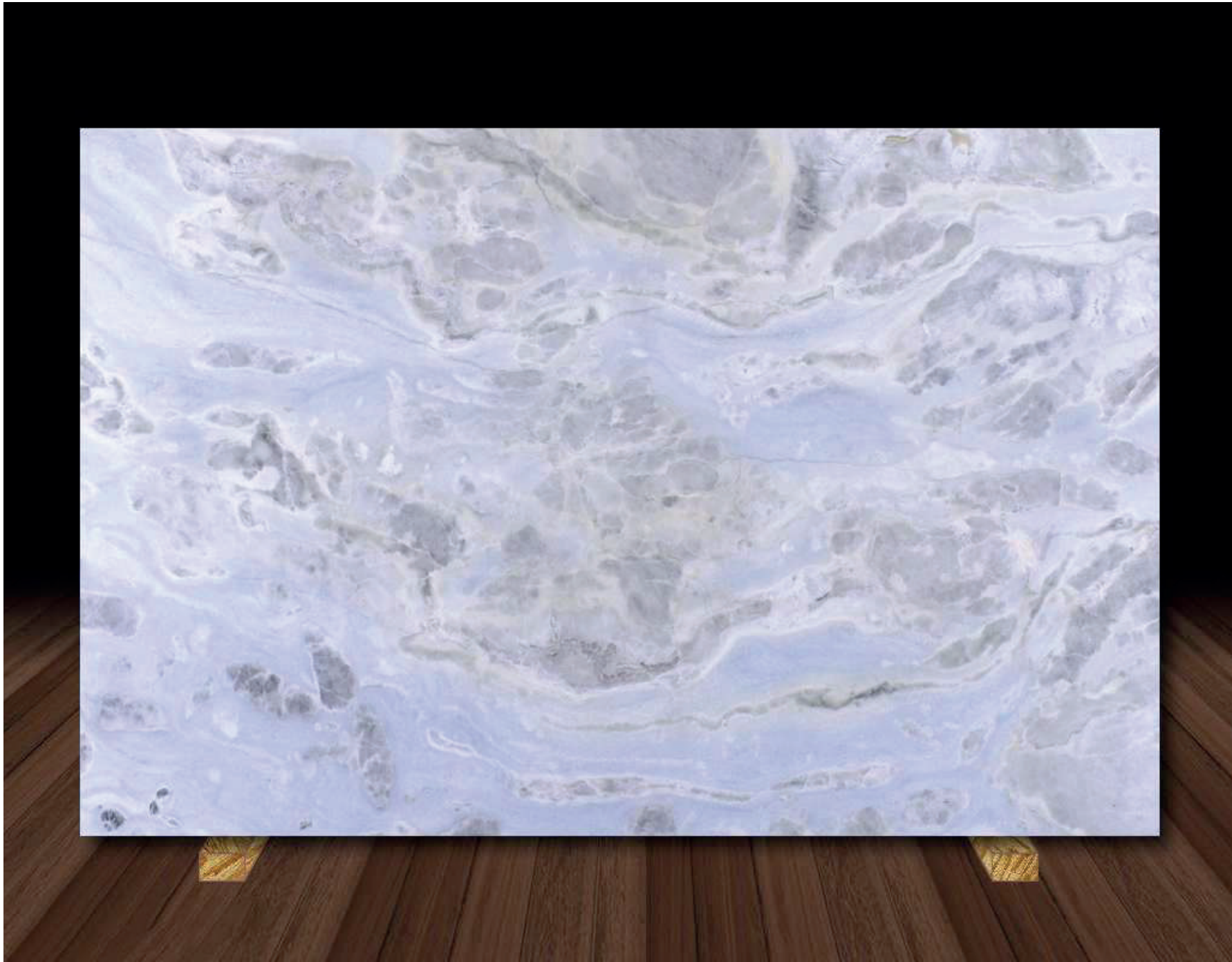
Blue, gray, and shades of white.

- **COMPOSITION**

Dolomite, quartz and calcite.

- **ORIGIN**

Aré Quarry, Rio de Janeiro.



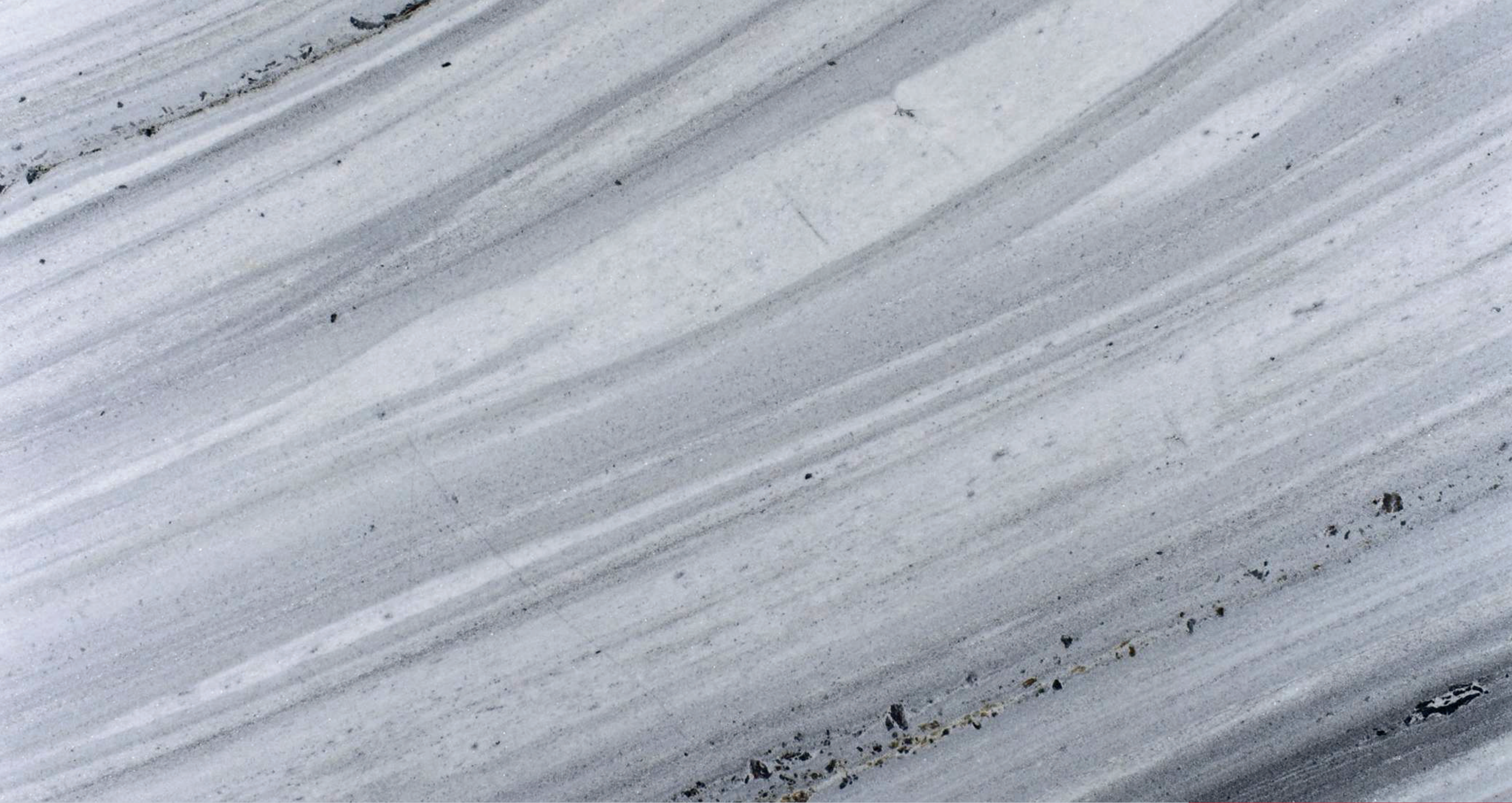
**Blue River Aré Marble**

**CAVA** ROCHAS



**Blue River Aré Marble**

**CAVA** ROCHAS



**Blizzard Aré Marble**

**CAVA** ROCHAS





ARÉ MARBLE

# Blizzard

Aré Marble Blizzard has a unique sophistication. Its veins move between white and gray in a perfect balance. Its design is formed by smooth, parallel lines that result in a pleasant, enveloping, and elegant look. The composition of minerals gives it a hard material, with high resistance, low porosity, and low water absorption.

**Blizzard** is a tribute to snowstorms, their beauty, their movement, and their natural majesty.

- **COLORS**

Gray, white and black dots.

- **COMPOSITION**

Dolomite, quartz and calcite.

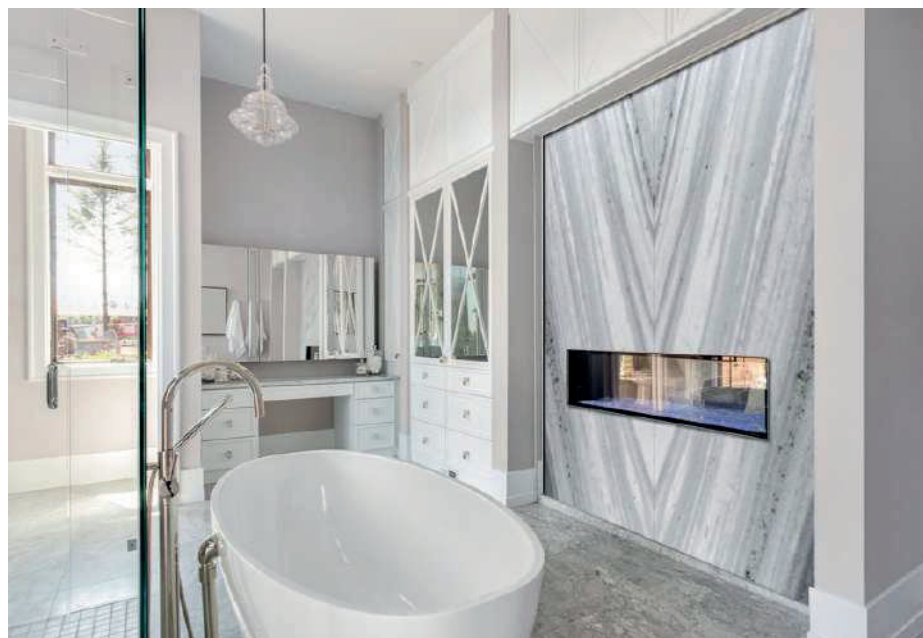
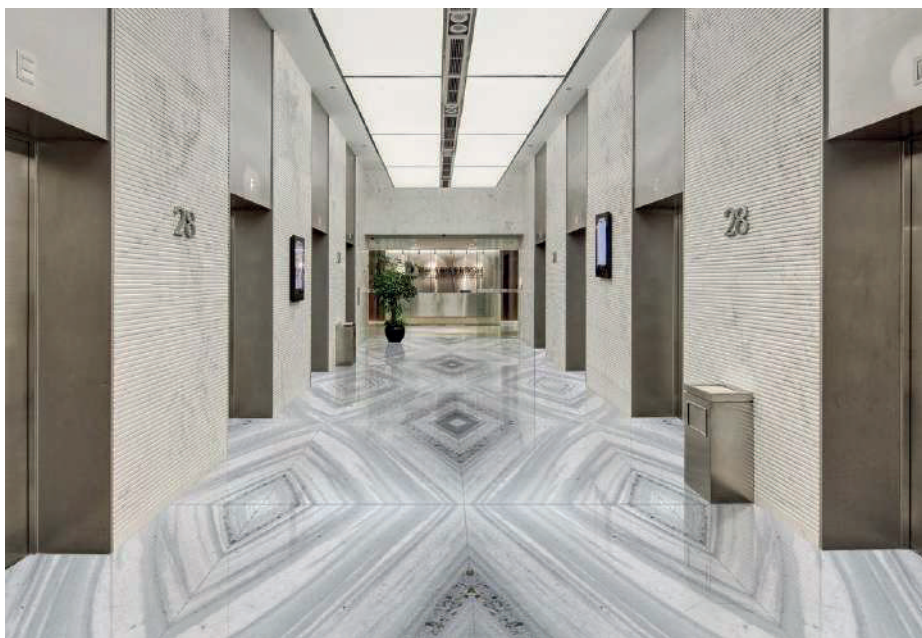
- **ORIGIN**

Aré Quarry, Rio de Janeiro.



**Blizzard Aré Marble**

**CAVA** ROCHAS



**Blizzard Aré Marble**

**CAVA** ROCHAS

# CAVA<sup>ROCHAS</sup>

We want to make history  
and it will be made with marble.

*Join us!*

## ARÉ QUARRY

Rio de Janeiro, Brazil.

## OFFICE | SHOWROOM

TIMS - Terminal Intermodal da Serra  
Serra, Espírito Santo, Brazil.

## PHONE

+55 (27) 98806-1031

## E-MAIL

comercial@cavarochas.com.br

Use the app camera to  
scan the QR-Code below.



[www.cavarochas.com](http://www.cavarochas.com)

